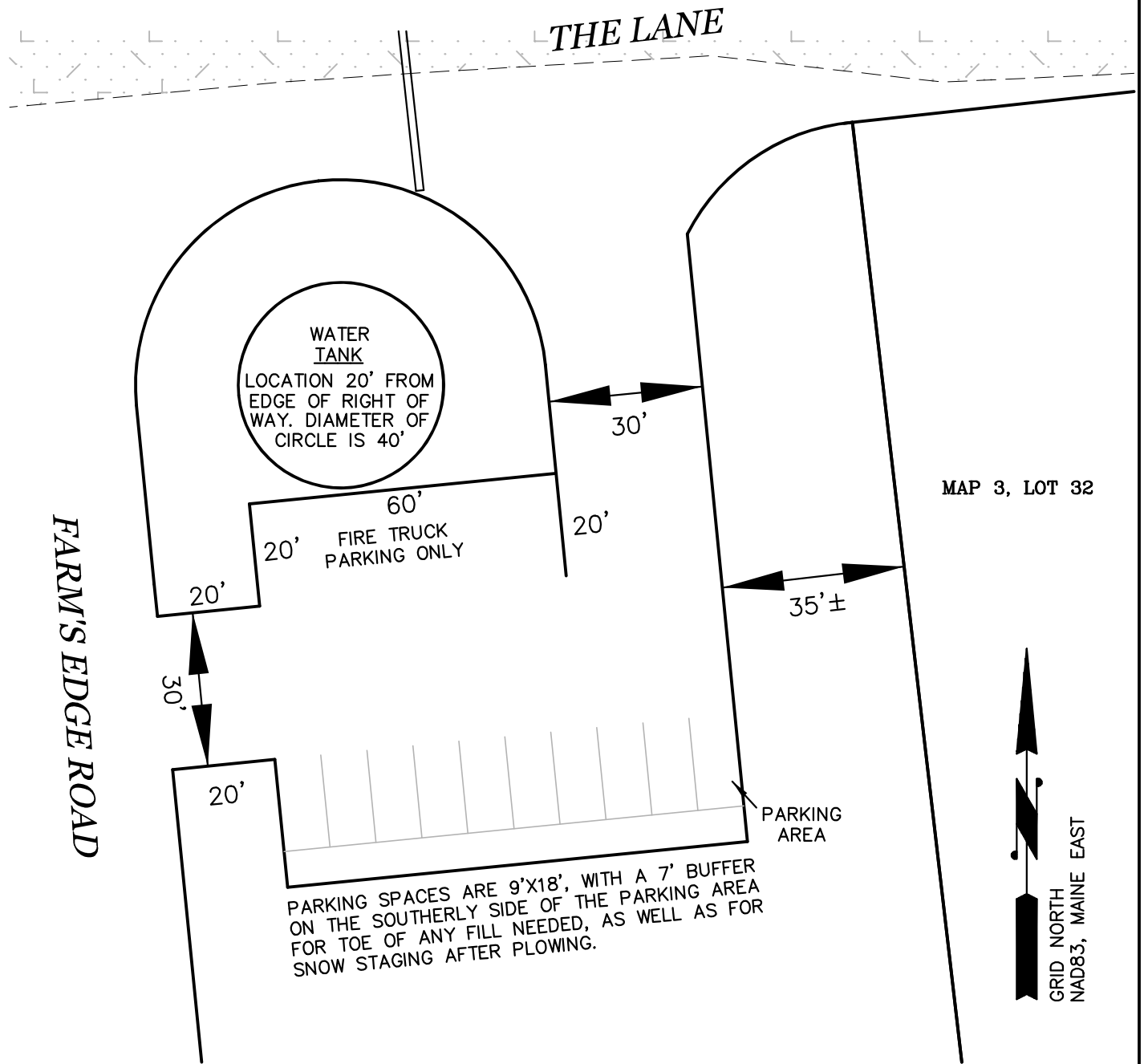


NOTES:

1. THE INTENT OF THIS SKETCH IS TO DEPICT A POSSIBLE CONFIGURATION FOR A FIRE ZONE PARKING AREA, A WATER TANK, AND PUBLIC PARKING FOR ACCESS TO A FOOTPATH TO THE JORDAN RIVER.



PRELIMINARY

SKETCH OF LAND

WEST FALLS SURVEYING
ANDREW M. MULHOLLAND, PLS 2497
PO BOX 74
MACHIAS, MAINE 04654
(207) 255-6000
westfallssurveying.com

LAND OF: MAINE WOODLAND PROPERTIES
FOR: FIRE ZONE PARKING LOCATION
LOCATION: WEST OF ROUTE 184
LAMOINE, HANCOCK COUNTY, MAINE
P/O BOOK 7148, PAGE 256

SCALE: 1"=30'
DATE: 10/5/2021
DRAWN BY: rjm
CHECKED BY: AMM
PROJECT NO: 2021-101

WASHINGTON COUNTY REGISTRY OF DEEDS