

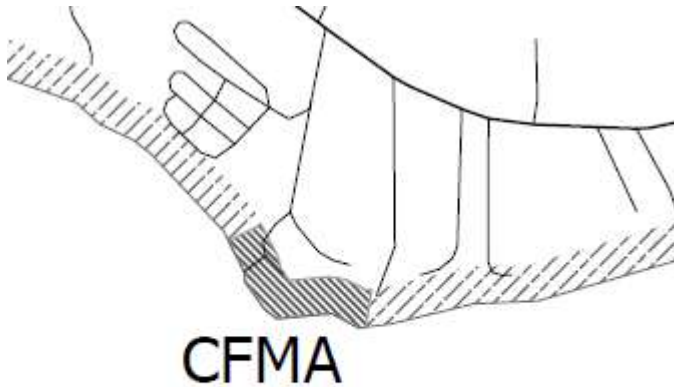
Town of Lamoine, Maine
606 Douglas Hwy.
Lamoine, ME 04605
207-667-2242
e-mail town@lamoine-me.gov,
website www.lamoine-me.gov



Proposed Lamoine Shoreland Map Amendment

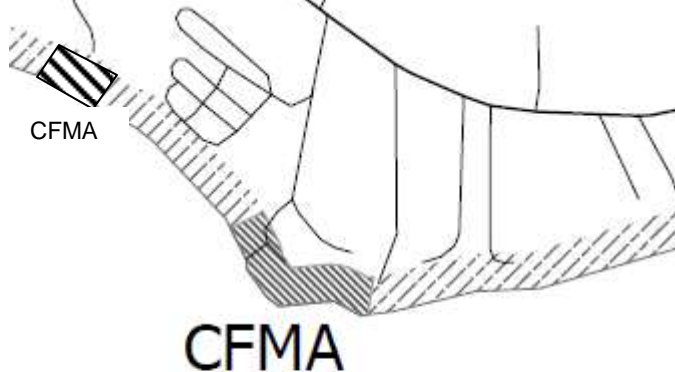
The proposed map amendment would place Lamoine Tax Map 13 Lot 50 into the Commercial Fisheries & Maritime Activities District. The lot is currently located in the Limited Residential District.

Current Shoreland Zoning Map Area:



Lamoine State Park Area

Proposed Zone Change

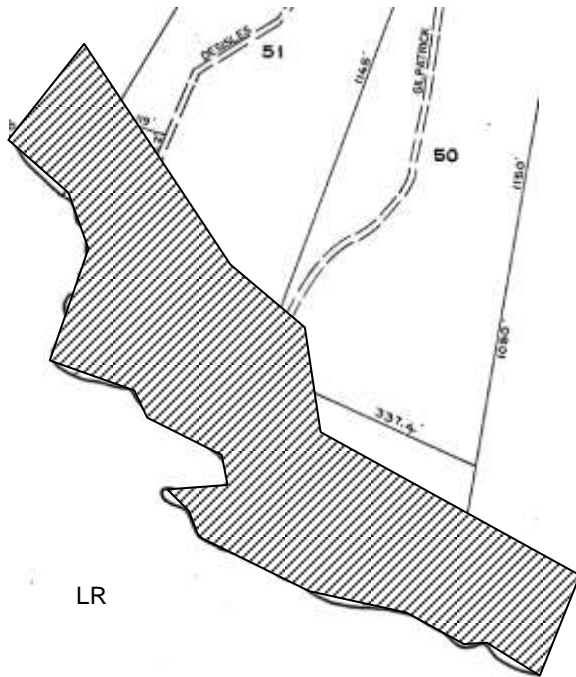


Lamoine State Park Area

Continued Next Page

Proposed Lamoine Shoreland Map Amendment

Current Property Tax Map Detail Area:



Proposed Zone Change

